




Storage Center Update Utility Administrator's Guide

Notes, Cautions, and Warnings

-  **NOTE:** A NOTE indicates important information that helps you make better use of your computer.
-  **CAUTION:** A CAUTION indicates either potential damage to hardware or loss of data and tells you how to avoid the problem.
-  **WARNING:** A WARNING indicates a potential for property damage, personal injury, or death.

Copyright © 2015 Dell Inc. All rights reserved. This product is protected by U.S. and international copyright and intellectual property laws. Dell™ and the Dell logo are trademarks of Dell Inc. in the United States and/or other jurisdictions. All other marks and names mentioned herein may be trademarks of their respective companies.

2015 - 08

Rev. A00

Contents

About This Guide	4
Revision History.....	4
Audience.....	4
1 Storage Center Update Utility	5
Application Overview.....	5
System Requirements.....	5
System Preparation.....	5
Download and Install the SCUU.....	5
Configure SupportAssist Settings.....	5
Install the Storage Center Update Utility.....	5
Update Storage Center Software.....	6

About This Guide

This guide describes how to update your storage system using the Storage Center Update Utility (SCUU).

The SCUU is used to update Storage Center series storage systems that cannot connect to the SupportAssist server. The SCUU provides updates to the Storage Center Operating System and firmware for Storage Center series storage systems running software version 6.6.2 or later.

Revision History

Document Number: N2T6R

Table 1. Document Revision History

Revision	Date	Description
A00	August 2015	Initial Release

Audience

The information provided in this guide is intended for users who cannot use the SupportAssist functionality to perform Storage Center updates.

 **CAUTION: Recovery of Storage Center software or system state is not possible without support assistance. The manufacturer recommends backing up the system before initiating any updates.**

Storage Center Update Utility

The Storage Center Update Utility (SCUU) is a Windows application that provides updates to the Storage Center Operating System on your storage system. The SCUU makes the Storage Center distribution or *distro* available to the Storage Center. The distro contains updates to the Storage Center Operating System and other Storage Center firmware.

Application Overview

Review the following guidelines before downloading and installing the Storage Center Update Utility (SCUU).

System Requirements

- The SCUU only supports updating software on storage systems running Storage Center Operating System version 6.6.x or later.
- The SCUU runs on Windows 7, Windows 8, Windows Server 2008 R2, and Windows Server 2012 R2.
- The SCUU requires .NET Framework version 4.5 or later.

System Preparation

The inbound TCP port needs to be open to allow the SCUU to serve updates. Use either of the following methods to open the inbound TCP port:

- Open the inbound TCP port in the Windows firewall. (The default port is 9005)
- In the **SCUU Preferences** window, select **Automatically configure Windows Firewall to allow port traffic**.


Download and Install the SCUU

1. Contact your Technical Support Services to download the SCUU and the update distro.
2. Unzip the distro into a location accessible by the SCUU.
3. Install the SCUU software in the default installation location according to the instructions in [Install the Storage Center Update Utility](#).

Configure SupportAssist Settings

To allow the SCUU to communicate with the Storage Center and serve updates, connect to the Storage Center using the Enterprise Manager Client and configure the SupportAssist settings.

1. In the **Storage** pane, select the Storage Center to modify.
2. In the right pane, click **Edit Settings**.
3. Select the **SupportAssist** tab.
4. Click **Turn Off SupportAssist**.


 **NOTE:** The following options are only available when SupportAssist is disabled.

5. Under the Configure Update Utility for updating Storage Center text, select **Enabled**.
6. In the **Update Utility Host or IP Address** field, enter the host name or IP address of the Storage Center Update Utility.
7. In the **Update Utility Port** field, enter the port of the Storage Center Update Utility. The default port is 9005.

For more information, see the *Enterprise Manager Administrator's Guide*.

Install the Storage Center Update Utility

Prerequisites

 **NOTE:** Install the SCUU on a computer that is on the same network as the Storage Center that you want to update. For new Storage Center installations, install the SCUU software before running the storage system setup wizard.

Steps

1. To start the installation, double-click the **ScuuSetup-1.xx.xx.xx.exe** file.
2. If prompted, allow the installation program to install the SCUU.

The **Preferences** dialog box opens for new SCUU installations.

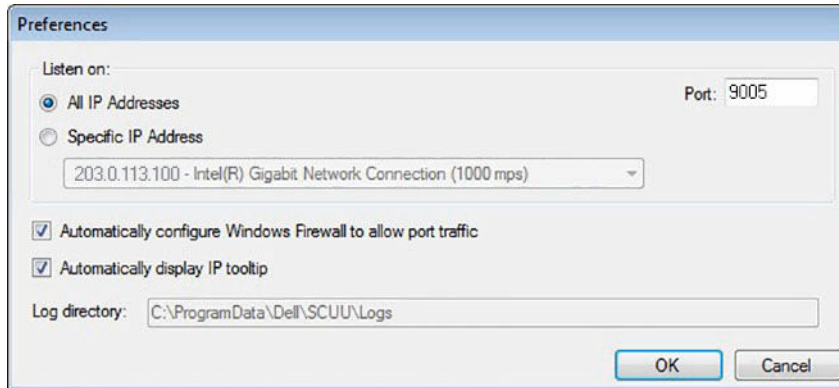



Figure 1. Storage Center Update Utility Preferences Dialog Box

Specify the following information in the **Preferences** dialog box:

- IP address on which the SCUU listens for update requests. You can specify a specific address, or listen on all IP addresses.
- Port through which the SCUU communicates

Next steps

-  **NOTE:** The firewall must be disabled on the inbound TCP port to allow the SCUU to provide updates to the Storage Center. To disable the firewall to allow inbound TCP port traffic, select **Automatically configure Windows Firewall to allow port traffic** in the **Preferences** dialog box.

Update Storage Center Software

Use these instructions to update Storage Center software.

Prerequisites

-  **CAUTION:** Recovery of Storage Center software or system state is not possible without assistance from Technical Support Services. The manufacturer recommends backing up the system before performing a Storage Center software update.

Steps

1. Start the SCUU.

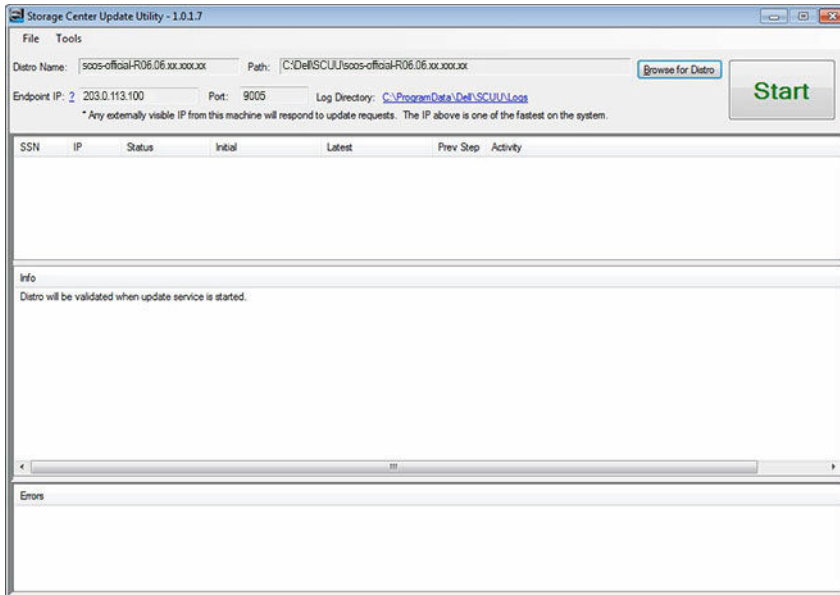


Figure 2. Storage Center Update Utility

2. Click **Browse for Distro**. The **Browse For Folder** dialog box appears.
3. Select the folder that contains the distro.
4. Click **OK**. The SCUU displays a progress message on the main window while the distro is validated. If the distro is valid, the **Start** button turns green and the message `Distro successfully validated` appears in the **Info** pane.
5. Click **Start**.
The SCUU hosts the update to the Storage Center, which allows the Storage Center to download the update.
6. (Optional) If you want to stop the update service, click **Stop**.
If any update sessions are in progress, a warning appears before the SCUU stops the update service.
7. After starting the SCUU, use the Enterprise Manager Client to check for updates.
 - a. Connect directly to the Storage Center or connect to a Data Collector and select the Storage Center to update from the **Storage** pane.
 - b. In the right pane, select **Actions** → **System** → **Check for Update**.

For more information about using Enterprise Manager, see the *Enterprise Manager Administrator's Guide*.